

Marner House

Our specialist brain injury care home in Nuneaton, Warwickshire





About our home

Located in Nuneaton, Marner House is a **residential care home**, offering support for up to 12 people living with acquired brain injuries and associated physical, emotional, and behavioural needs.

Our fully accessible home has **eight spacious bedrooms**. We also have **four step-down flats**, for those ready to transition to more independent living! Our nearby supported living sister service also offers opportunities to bridge the gap between specialist support and greater independence.

Our home has plenty of space for **redeveloping both daily living and social skills**, including:

- ✔ functional training kitchen adapted for mobility needs
- ✔ a gym for maintaining a healthy lifestyle

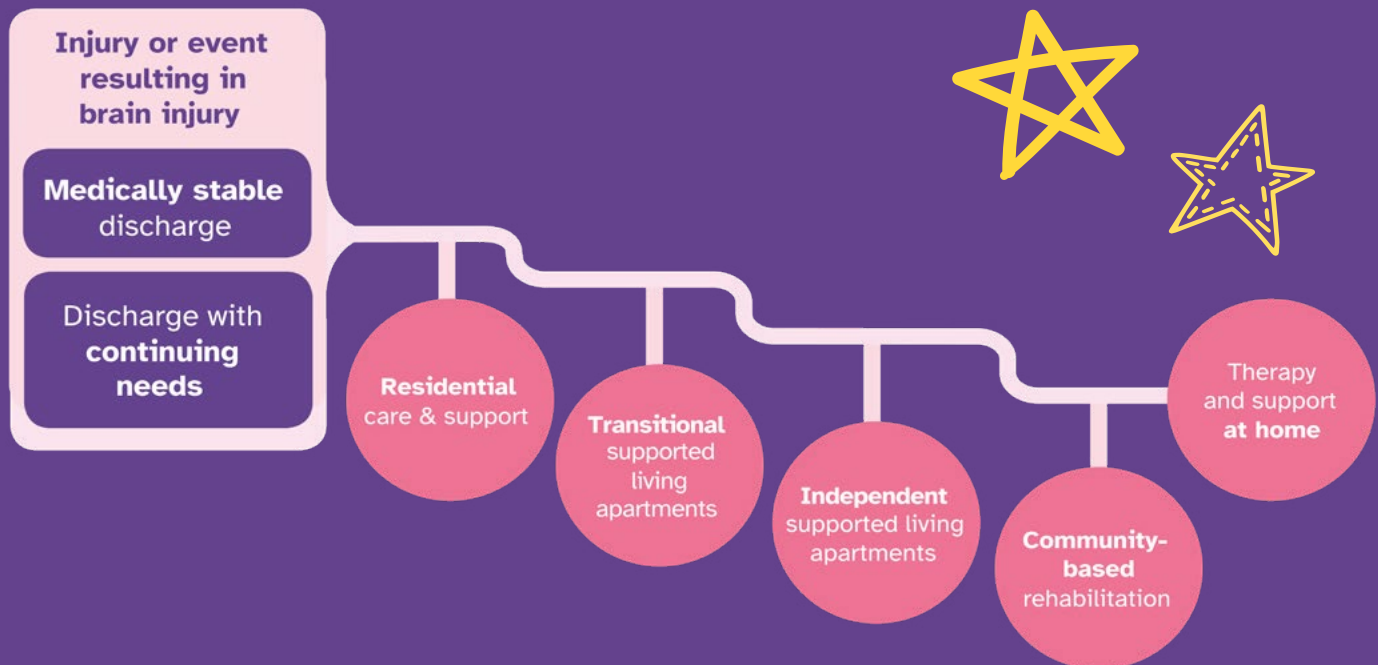
We're situated in a quiet residential area, **bordering a peaceful canal**. With a bus and train station nearby, getting around is accessible and easy. Plus, local shopping, gyms, and other amenities are just a short distance away!

Our pathway

We understand everyone's brain injury experience is unique, so we tailor our support to **meet your needs and goals**. Through **innovative person-centred support**, we identify areas for developing your abilities, increasing your confidence, and making **positive steps towards independent living**.

We focus on rehabilitation potential and design functional support that enhances your skills and nurtures meaningful connections within the community.

Together, **we co-create care plans** reflecting what's important to you, ensuring we **support you to achieve your aspirations**. Regular person-centred reviews ensure we respond and adapt our support to meet your changing and evolving support needs and goals.





Promoting wellbeing

Scan Me!

Learn more about **Marnier House** on our website!



Each day is centred around **fun activities**, so you can develop and practice your skills in everyday situations both at home or in the community.

We ensure activities are **bespoke to your individual interests**, preferences, needs and values. Working with you, we source meaningful opportunities that support your goals and **promote quality of life**.

We take a **person-centred approach** to your care, placing you at the heart of everything we do. Our team are specially trained to support the broader needs that brain injuries can create, including additional physical and mental health needs.

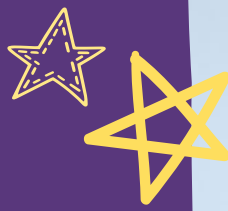
Through support tailored to your unique needs, we help you **rebuild essential skills, increase your confidence**, and move towards greater independence at a pace that feels right for you. Through consistent encouragement, and personalised guidance, we're by your side every step of the way - we empower you to achieve **positive outcomes** and live the life you choose!





Voyage Care has
200+ places for
community-based
rehabilitation!

Our expertise



Compassionate team

Diverse, skilled teams united by empathy and a commitment to improving lives.



Positive environment

Supportive, homely atmospheres where people feel safe, valued, and respected.



Active rehabilitation

Skills and cognitions are deeply embedded through meaningful daily activities, resulting in positive outcomes.



Integrated therapy

Our in-house Therapy Lead connects with expert clinicians to weave therapies into daily life.



Collaborative care

Strong partnerships with local professionals enables seamless multi-disciplinary rehab pathways.



Accredited by



the brain injury association



voyagecare 

We'd love to hear from you!

Know someone who would **benefit from our specialist support at Marnier House?**

Our expert team is here to **guide you every step of the way**. From initial enquiry, to assessment and transition, we've got it covered.

Just scan the QR code, fill in your details, and we'll take care of the rest!

Voyage Care **supports 3,500+ people** with a learning disability, autism, brain injuries and complex needs.



Get in touch



0800 035 3776



referrals@voyagecare.com



www.voyagecare.com



Scan QR code to
make a referral 