



Devonshire House

Specialist brain injury rehabilitation
service in Manchester



voyagecare 



About our home

Located in Manchester,
Devonshire House
is a **purpose-built brain
injury rehabilitation home offering
specialist support to those with**

acquired brain injuries and associated complex needs. Split into three dedicated
wings, each area is designed to support your progression along the rehabilitation pathway.

From **residential support** at the start of your journey, to **transitional flats** for added
independence, we'll provide the right support for you when you need it most.

Surrounded by **lawned grounds and a communal courtyard**, our home offers ample
space for you to redevelop skills, embrace wellbeing, and build meaningful connections
with others. We offer:

- ✓ Modern, spacious bedrooms overlooking our gardens.
- ✓ Wheelchair friendly accommodation, with the option of overhead tracking and a hoist.
- ✓ Nearby transport links, convenient for visits from friends and family.
- ✓ Access to a supportive, vibrant local community.



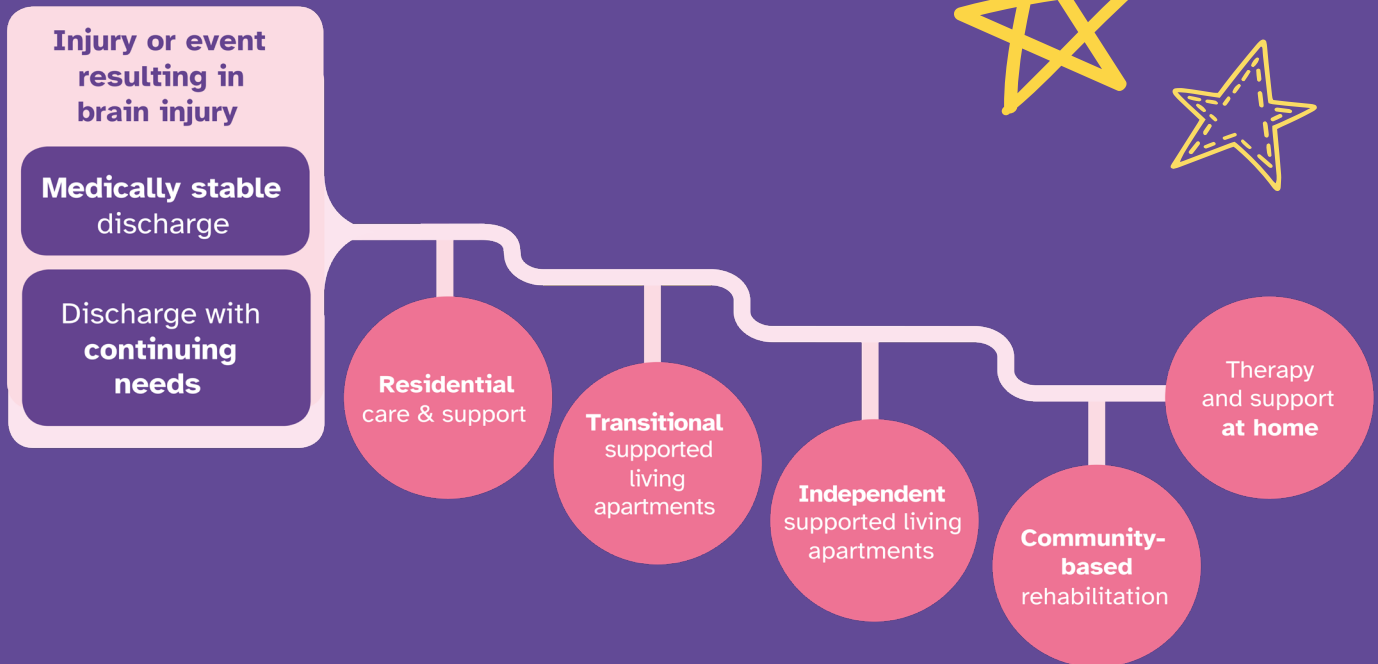
Our pathway

We understand everyone's brain injury experience is unique, so we tailor our support to **meet your needs and goals**. Through **innovative person-centred support**, we identify areas for developing abilities, increasing confidence, and making **positive steps towards independent living**.

We focus on rehabilitation potential and design holistic support that enhances skills and nurtures meaningful connections within the community.

Together **we co-create care plans** reflecting what's important to you, ensuring we **support you to achieve your aspirations**.

Our goal is to **support you to regain lost skills**, reclaim your independence, and **establish a meaningful future**.





Promoting wellbeing

Scan Me!

To learn more about **Devonshire House** on our website!



Each day is centred around **fun and functional activities**, so you can develop and practice your skills in everyday situations.

We ensure activities are **bespoke to your interests**, preferences, needs and values. Working with you, we source meaningful opportunities that support your goals and **promote quality of life**.

As part of our person-centred approach, we work with **expert therapists who tailor therapy sessions** to meet your needs and goals. Our current therapies include **Neuro-art Therapy, Neuro-physiotherapy, and Neuropsychology.**

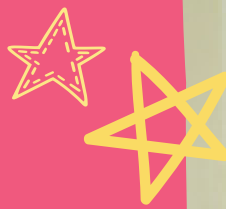
Our home is designed to **support your rehabilitation pathway and overall wellbeing.** We benefit from an on-site multi-functional gym with adapted equipment, so you can **maintain a healthy lifestyle** and **regain lost mobility.** We also have a dedicated **therapy area**, including a training kitchen, to support you to redevelop independent living skills.





Voyage Care has
200+ places for
community based
rehabilitation!

Our expertise



Compassionate team

Diverse, skilled team united by empathy and a commitment to improving lives.



Positive environment

Supportive, homely atmosphere where people feel safe, valued, and respected.



Active rehabilitation

Skills and cognition are deeply embedded through daily, meaningful activities, resulting in positive outcomes.



Integrated therapy

Our in-house Therapy Lead connects with expert clinicians to weave therapies into daily life.



Collaborative care

Strong partnerships with local professionals enables seamless multi-disciplinary rehab pathways.



Accredited by



the brain injury association



voyagecare 

We'd love to hear from you!

Know someone who would **benefit from our specialist support at Devonshire House?**

Our expert team is here to **guide you every step of the way**. From initial enquiry, to assessment and transition, we've got it covered.

Just scan the QR code, fill in your details, and we'll take care of the rest!

Voyage Care **supports 3,500+ people** with a learning disability, autism, brain injuries and complex needs.



Get in touch



0800 035 3776



referrals@voyagecare.com



www.voyagecare.com



Scan QR code to
make a referral

