

Carville Road

Specialist brain injury rehabilitation
service in Wallsend, Tyne & Wear



voyagecare 



About our home

Located in Wallsend, Tyne & Wear, Carville Road offers specialist support for up to **twelve people with brain injuries and associated complex needs.**

Through a community-based, functional approach, we work with you to regain lost skills and achieve a **level of independence that's right for you.**

Our vibrant home offers plenty of opportunities for **developing important skills** and relationships with others, including:

- ✓ A spacious communal lounge for socialising and engaging with others.
- ✓ A large kitchen, perfect for practicing daily living skills.
- ✓ A well maintained, accessible garden, complete with a patio/seating area.
- ✓ A vibrant local community with excellent amenities and public transport links to nearby places of interest and major cities, including Newcastle.



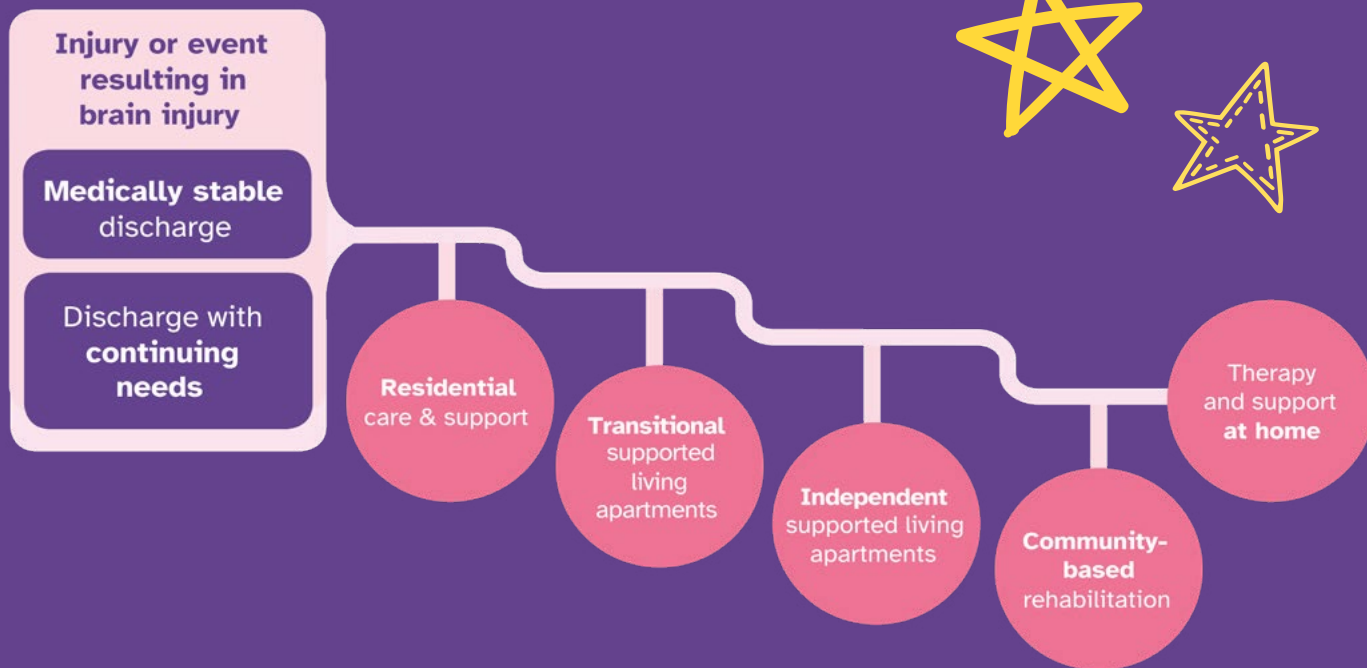
Our pathway

We understand everyone's brain injury experience is unique, so we tailor our support to **meet your needs and goals**. Through **innovative person-centred support**, we identify areas for developing abilities, increasing confidence, and making **positive steps towards independent living**.

We focus on rehabilitation potential and design holistic support that enhances skills and nurtures meaningful connections within the community.

Together **we co-create care plans** reflecting what's important to you, ensuring we **support you to achieve your aspirations**.

Our goal is to **support you to regain lost skills**, reclaim your independence, and **establish a meaningful future**.





Promoting wellbeing

Scan Me!

To learn more about **Carville Road** on our website!



Each day is centred around **fun and functional activities**, so you can develop and practice your skills in everyday situations.

We ensure activities are **bespoke to your interests**, preferences, needs and values. Working with you we source meaningful opportunities that support your goals and **promote quality of life**.

Whether your goal is to return to the community or stay with us long-term, we'll work with you to enhance your independence, so you can **live the life you choose.**

Your personalised support plan will **focus on your wellbeing** through cognitive, social, emotional, and physical development. With our multidisciplinary team by your side, you'll gently develop an understanding of your brain injury and **rediscover your confidence** in everyday scenarios.





Voyage Care has
200+ places for
community based
rehabilitation!

Our expertise



Compassionate team

Diverse, skilled team united by empathy and a commitment to improving lives.



Positive environment

Supportive, homely atmosphere where people feel safe, valued, and respected.



Active rehabilitation

Skills and cognition are deeply embedded through daily, meaningful activities, resulting in positive outcomes.



Integrated therapy

Our in-house Therapy Lead connects with expert clinicians to weave therapies into daily life.



Collaborative care

Strong partnerships with local professionals enables seamless multi-disciplinary rehab pathways.



Accredited by



the brain injury association



voyagecare 

We'd love to hear from you!

Know someone who would **benefit from our specialist support at Carville Road?**

Our expert team is here to **guide you every step of the way**. From initial enquiry, to assessment and transition, we've got it covered.

Just scan the QR code, fill in your details, and we'll take care of the rest!

Voyage Care **supports 3,500+ people** with a learning disability, autism, brain injuries and complex needs.



Get in touch



0800 035 3776



referrals@voyagecare.com



www.voyagecare.com



Scan QR code to
make a referral

