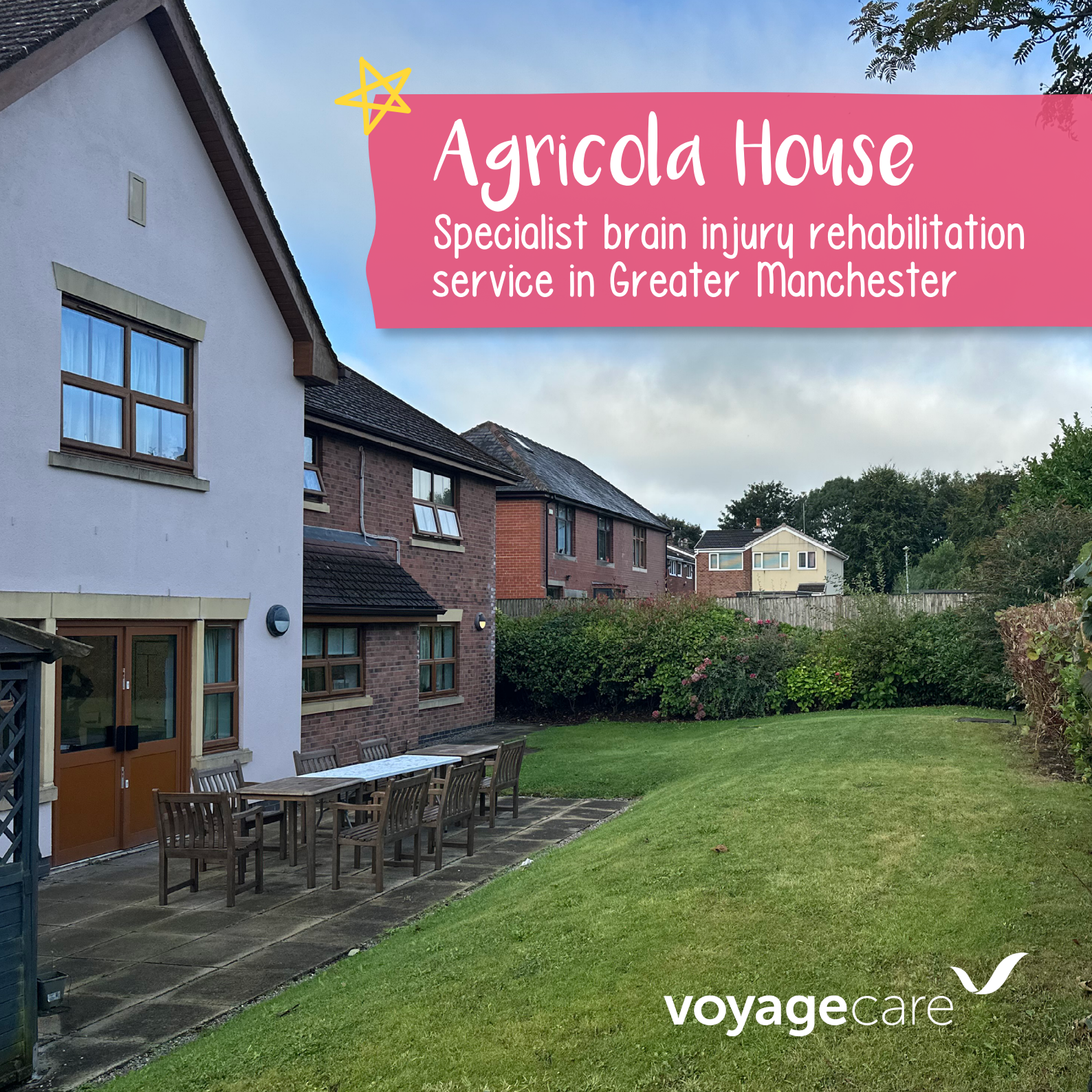




# Agricola House

Specialist brain injury rehabilitation  
service in Greater Manchester







## About our home

Located in Greater Manchester, Agricola House offers specialist support for up to **eight people with brain injuries and associated complex needs.**

Through a community-based, functional approach, we work with you to regain lost skills and achieve a **level of independence that's right for you.**

Our vibrant home offers plenty of opportunities for **developing important skills** and relationships with others, including:

- ✓ A spacious communal lounge for socialising and engaging with others.
- ✓ A large kitchen-diner, perfect for practicing daily living skills.
- ✓ A well maintained, accessible garden, complete with a patio/seating area.
- ✓ The local community offers excellent local amenities, and we have excellent public transport links to nearby places of interest and major cities, including Manchester.



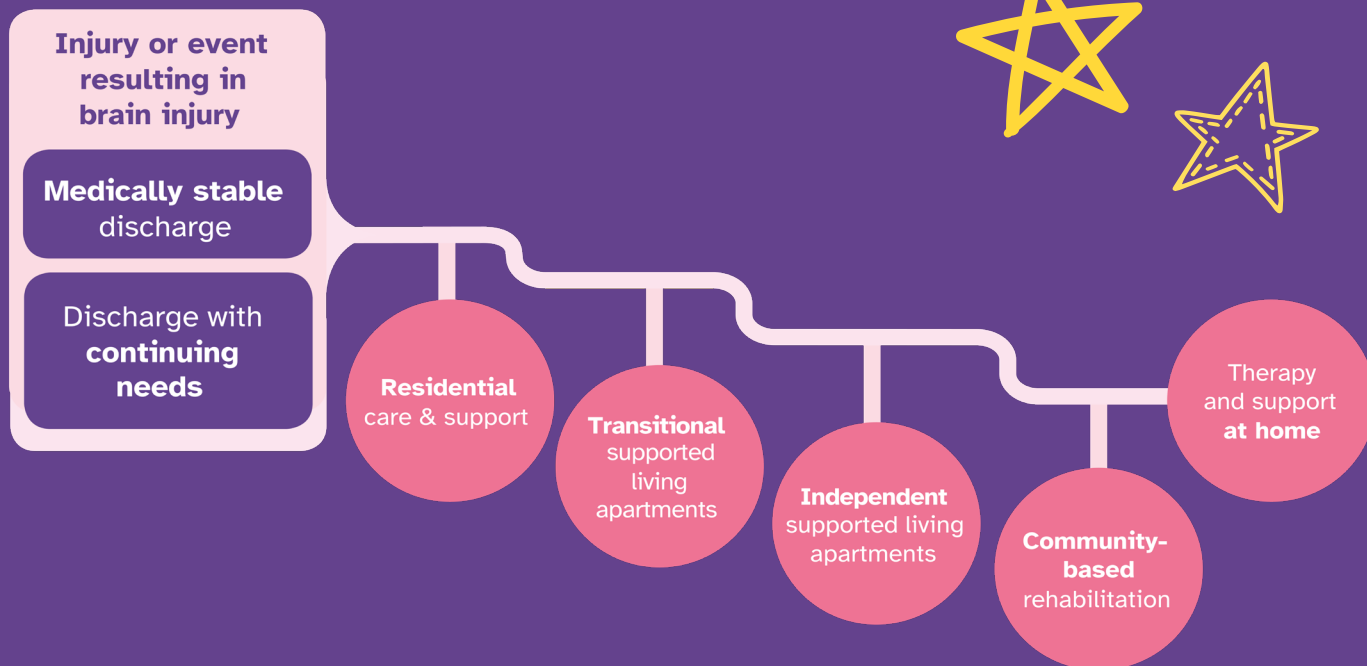
# Our pathway

We understand everyone's brain injury experience is unique, so we tailor our support to **meet your needs and goals**. Through **innovative person-centred support**, we identify areas for developing abilities, increasing confidence, and making **positive steps towards independent living**.

We focus on rehabilitation potential and design holistic support that enhances skills and nurtures meaningful connections within the community.

Together **we co-create care plans** reflecting what's important to you, ensuring we **support you to achieve your aspirations**.

Our goal is to **support you to regain lost skills**, reclaim your independence, and **establish a meaningful future**.





# Promoting wellbeing

Scan Me!

To learn more about **Agricola House** on our website!



Each day is centred around **fun and functional activities**, so you can develop and practice your skills in everyday situations.

We ensure activities are **bespoke to your interests**, preferences, needs and values. Working with you we source meaningful opportunities that support your goals and **promote quality of life**.



As part of our person-centred approach, we work with **expert therapists who tailor therapy sessions** to meet your needs and goals. Our current therapies include **Cognitive Behavioural Therapy and Occupational Therapy**.

Our home is designed to **support your individual rehabilitation pathway and overall wellbeing**. We have a dedicated **therapy area**, including a training kitchen, to support you to redevelop independent living skills. We benefit from nearby gym facilities, so you can **maintain a healthy lifestyle and regain lost mobility**.



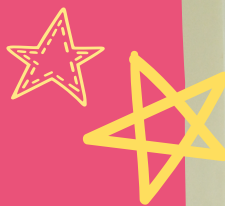




Voyage Care has  
**200+ places** for  
community based  
rehabilitation!



# Our expertise



## Compassionate team

Diverse, skilled team united by empathy and a commitment to improving lives.



## Positive environment

Supportive, homely atmosphere where people feel safe, valued, and respected.



## Active rehabilitation

Skills and cognition are deeply embedded through daily, meaningful activities, resulting in positive outcomes.



## Integrated therapy

Our in-house Therapy Lead connects with expert clinicians to weave therapies into daily life.



## Collaborative care

Strong partnerships with local professionals enables seamless multi-disciplinary rehab pathways.



Accredited by



the brain injury association



voyagecare 

## We'd love to hear from you!

Know someone who would **benefit from our specialist support at Agricola House?**

Our expert team is here to **guide you every step of the way**. From initial enquiry, to assessment and transition, we've got it covered.

Just scan the QR code, fill in your details, and we'll take care of the rest!

Voyage Care **supports 3,500+ people** with a learning disability, autism, brain injuries and complex needs.



### Get in touch



0800 035 3776



referrals@voyagecare.com



www.voyagecare.com



Scan QR code to  
make a referral

