

# Rugeley Road

Specialist brain injury rehabilitation  
service in Staffordshire



voyagecare 



## About our home

Located in Staffordshire, Rugeley Road is a **specialist residential home** offering expert support for up to seven people with acquired brain injuries and associated complex needs.

Our thoughtfully designed home has seven accessible, fully furnished flats that promote a sense of independence.

We have plenty of space for **socialising and engaging** with housemates, including:

- ✓ A communal activity room for enjoying hobbies.
- ✓ Accessible outdoor areas including a landscaped rear garden.

Located within the semi-rural town of Burntwood, we have a range of local amenities within easy reach. These include healthcare facilities, a library, leisure centre, local retail shops, and food outlets. For trips further afield, we have our own accessibility vehicle. We actively encourage you to pursue your hobbies and interests at home and in the local community.



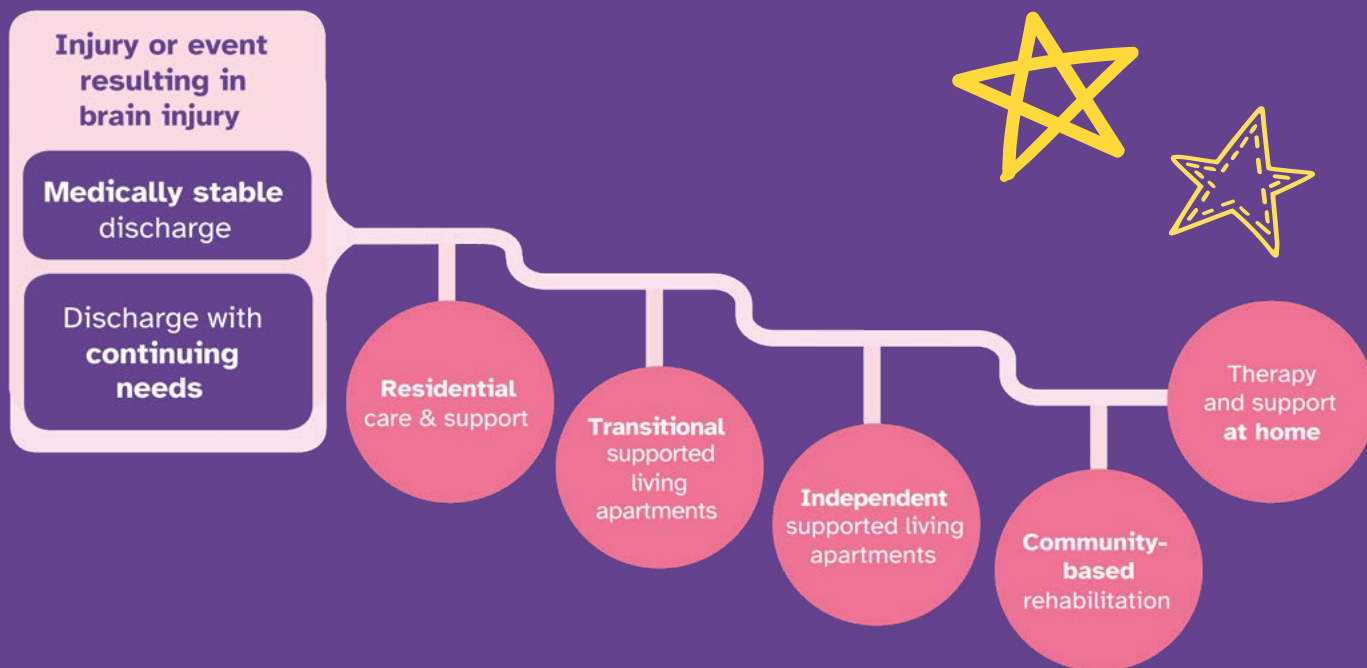
# Our pathway

We understand everyone's brain injury experience is unique, so we tailor our support to **meet your needs and goals**. Through **innovative person-centred support**, we identify areas for developing your abilities, increasing your confidence, and making **positive steps towards independent living**.

We focus on rehabilitation potential and design functional support that enhances your skills and nurtures meaningful connections within the community.

Together, **we co-create care plans** reflecting what's important to you, ensuring we **support you to achieve your aspirations**.

Our goal is to **support you to regain lost skills**, reclaim your independence, and **establish a meaningful future**.







## Promoting wellbeing

Scan Me!

To learn more about **Rugeley Road** on our website!



Each day is centred around **fun and functional activities**, so you can develop and practice your skills in everyday situations.

We ensure activities are **bespoke to your individual interests**, preferences, needs and values. Working with you, we source meaningful opportunities that support your goals and **promote quality of life**.

As part of our person-centred approach to brain injury rehab, we work with **expert therapists who tailor therapy sessions** to meet your needs and goals. Our current therapies include **Occupational Therapy, Physiotherapy, Neuro-Music Therapy, Cognitive Behavioural Therapy (CBT), and Speech and Language Therapy.**

Our home is designed to **support both your rehabilitation pathway and overall wellbeing** by offering space to redevelop lost skills. We benefit from nearby leisure facilities, empowering you to **maintain a healthy lifestyle and regain lost mobility.**

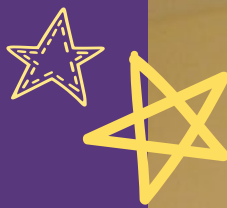






Voyage Care has  
**200+ places** for  
community-based  
rehabilitation!

# Our expertise



## Compassionate team

Diverse, skilled teams united by empathy and a commitment to improving lives.



## Positive environment

Supportive, homely atmospheres where people feel safe, valued, and respected.



## Active rehabilitation

Skills and cognitions are deeply embedded through meaningful daily activities, resulting in positive outcomes.



## Integrated therapy

Our in-house Therapy Lead connects with expert clinicians to weave therapies into daily life.



## Collaborative care

Strong partnerships with local professionals enables seamless multi-disciplinary rehab pathways.

Accredited by



the brain injury association







voyagecare 

## We'd love to hear from you!

Know someone who would **benefit from our specialist support at Rugeley Road?**

Our expert team is here to **guide you every step of the way**. From initial enquiry, to assessment and transition, we've got it covered.

Just scan the QR code, fill in your details, and we'll take care of the rest!

Voyage Care **supports 3,500+ people** with a learning disability, autism, brain injuries and complex needs.



### Get in touch



0800 035 3776



referrals@voyagecare.com



www.voyagecare.com



Scan QR code to  
make a referral

