



# Linnet Mews

Specialist brain injury rehabilitation  
service in Chesterfield



voyagecare 



## About our home

Located in Chesterfield, Linnet Mews is a **specialist residential home** offering specialist support for up to ten adults with acquired brain injuries and associated needs.

Our purpose-built home has six accessible en-suite bedrooms for full residential care, and four fully furnished, self-contained flats for those ready to embrace more independence.

We have plenty of space for **developing important skills**, including:

- ✓ **dedicated therapy quarter** on the first floor, accessible via a lift
- ✓ **accessible outdoor areas**, including a landscaped rear garden
- ✓ **multi-functional gym** to support physical rehabilitation

Located within the semi-rural village of Clowne, we have a range of local amenities within easy reach. Our surrounding vibrant community offers independent shops, health and wellbeing facilities, and scenic parks. We support you to find opportunities to pursue your interests while integrating with the local community.



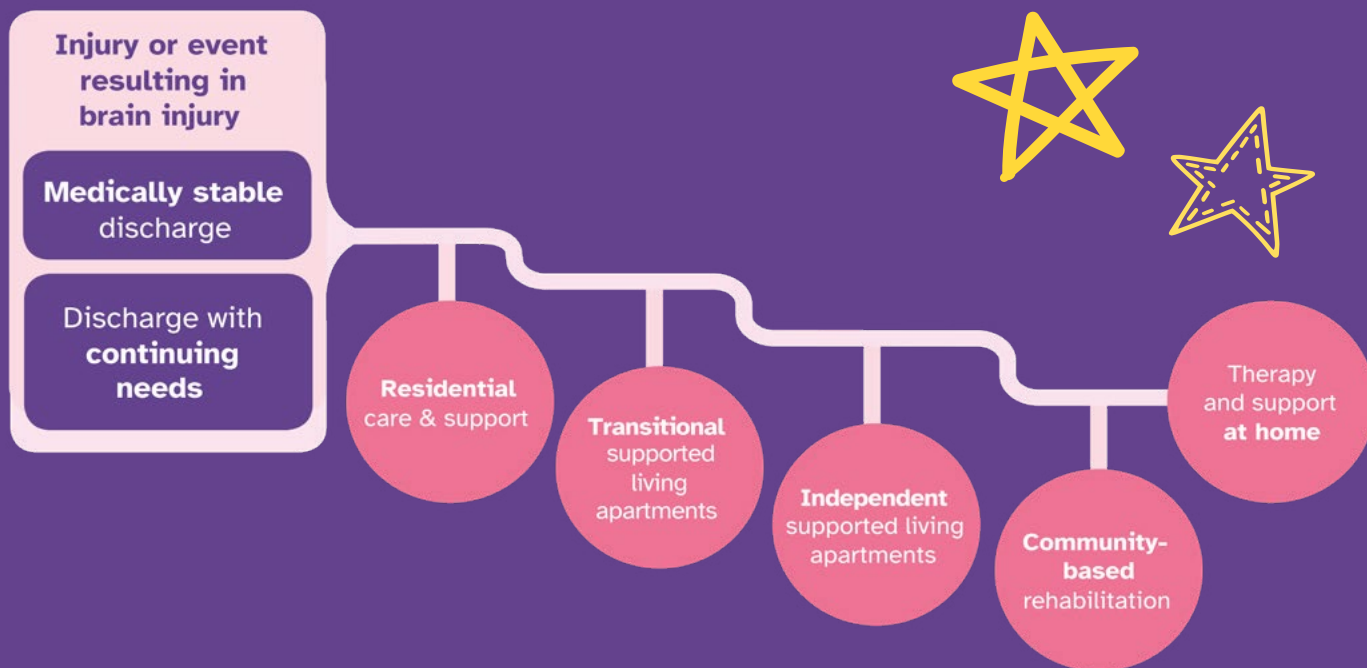
# Our pathway

We understand everyone's brain injury experience is unique, so we tailor our support to **meet your needs and goals**. Through **innovative person-centred support**, we identify areas for developing your abilities, increasing your confidence, and making **positive steps towards independent living**.

We focus on rehabilitation potential and design functional support that enhances your skills and nurtures meaningful connections within the community.

Together, **we co-create care plans** reflecting what's important to you, ensuring we **support you to achieve your aspirations**.

Our goal is to **support you to regain lost skills**, reclaim your independence, and **establish a meaningful future**.







# Promoting wellbeing

Scan Me!

Learn more about **Linnet  
Mews** on our website!



Each day is centred around **fun and functional activities**, so you can develop and practice your skills in everyday situations.

We ensure activities are **bespoke to your individual interests**, preferences, needs and values. Working with you, we source meaningful opportunities that support your goals and **promote quality of life**.

As part of our person-centred approach to your support, we work with **expert therapists who tailor therapy sessions** to meet your needs and goals. Our current therapies include **Art Psychotherapy, Neuro-physiotherapy, and Psychology.**

Our home is designed to support both your rehabilitation pathway and **overall wellbeing** by offering space to redevelop lost skills and cognitions. We benefit from nearby leisure facilities, empowering you to **maintain a healthy lifestyle**, regain lost mobility, and promote positive emotional wellbeing!



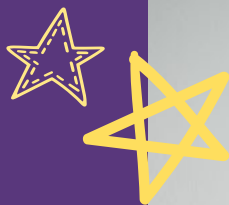




Voyage Care has  
**200+ places** for  
community-based  
rehabilitation!



# Our expertise



## Compassionate team

Diverse, skilled teams united by empathy and a commitment to improving lives.



## Positive environment

Supportive, homely atmospheres where people feel safe, valued, and respected.



## Active rehabilitation

Skills and cognitions are deeply embedded through meaningful daily activities, resulting in positive outcomes.



## Integrated therapy

Our in-house Therapy Lead connects with expert clinicians to weave therapies into daily life.



## Collaborative care

Strong partnerships with local professionals enables seamless multi-disciplinary rehab pathways.





## We'd love to hear from you!

Know someone who would **benefit from our specialist support at Linnet Mews?**

Our expert team is here to **guide you every step of the way**. From initial enquiry, to assessment and transition, we've got it covered.

Just scan the QR code, fill in your details, and we'll take care of the rest!

Voyage Care **supports 3,500+ people** with a learning disability, autism, brain injuries and complex needs.



### Get in touch



**0800 035 3776**



**referrals@voyagecare.com**



**www.voyagecare.com**



Scan QR code to  
make a referral

