

31 Abbots Road, Erdington



CARE HOMES by

voyagecare



A place to call home

Abbotts Road is a residential care home supporting up to four adults with learning disabilities and autism.

Our detached, spacious home has four bedrooms and lots of space for residents to socialise, including our communal lounge, conservatory and kitchen-diner. We also have a large garden, complete with garden furniture and a swing, where our residents love to spend their time during the warmer months.

Our home is located in Erdington, in the West Midlands, and we have great transport links into Birmingham City Centre as well as the M6 motorway. There's lots to do nearby and we're also not far from Star City, a local family entertainment and leisure complex that our residents love to visit for trips out.





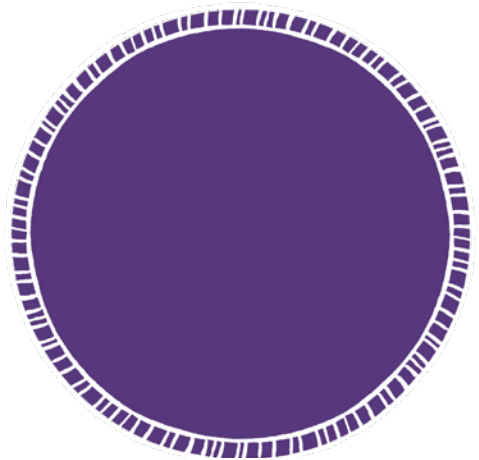
The vacancy

We currently have one vacant bedroom at Abbotts Road, located on the ground floor of our home.

The newly renovated room is fully furnished, including a built-in wardrobe, single bed and bedside table. The room also has it's own en-suite bathroom with a walk-in shower.

The residents at Abbotts Road are aged between 30-50 years old and enjoy accessing local day opportunities and other social activities as part of their support plan.

This vacancy would be ideal for an individual looking to increase their confidence in a supportive and sociable environment.



We're keeping you safe

Our main priority at Voyage Care is to help you lead the life you want, in a secure and safe way. Throughout the COVID-19 pandemic, our team is constantly updating our approach based on the latest Government policies and procedures, with steps in place to reduce the risk of transmission.

Some of our COVID safe actions include:

- Weekly COVID-19 testing for all our support staff.
- Maintaining service-level plans to reduce the risk of infection spreading and manage any outbreaks.
- Keeping a focus on infection control and hygiene protocols, including a robust supply of Personal Protective Equipment (PPE).
- Enabling a convenient virtual assessment process. This includes the use of online meetings, tours and chats with the team.
- Using technology to keep you in touch with your loved ones when socially distanced visits are not possible. This includes virtual picnics, movie nights and quizzes.
- Focusing on your mental well-being throughout this difficult time through home-based activities – some of our services have even created their own pop-up pubs!

During these unprecedented times, we understand how difficult and confusing it can be. We're here to support you by sharing reliable and honest information, keeping you informed of our response and shining a light on all the positive things happening in social care.



Our commitment to quality

We're committed to providing person-centred, high quality care and support – demonstrated by our sector-leading 94% Good or Outstanding* quality ratings by the Care Quality Commission.

Our highly trained, specialist teams use an individualised approach to support. We're committed to supporting you in a way that works for you – with reliability and consistency. You can be assured that your needs are at the centre of all we do.

**Data accurate as of June 2021.*

“People were supported to have maximum choice and control of their lives and staff support them in the least restrictive way possible and in their best interests; the policies and systems in the service supported this practice.”

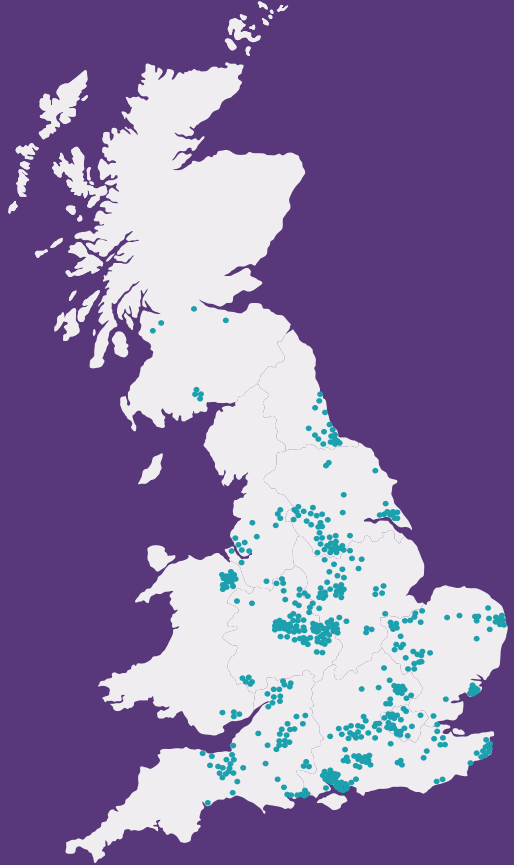
***CQC Inspection Report
31 January 2020***



About Voyage Care

Voyage Care is a sector-leading provider of specialist care and support to 3,500+ people with learning disabilities, autism, brain injuries and complex needs.

We offer person-centred care in a range of settings. This can be out and about in the community, in your own home or in one of our residential care homes.



Get in touch

Contact our friendly enquiry team to discuss how we can support you or a loved one.



0800 035 3776
referrals@voyagecare.com
www.voyagecare.com