

Uppingham Gardens, Berkshire



CARE HOMES by
voyagecare 

A place to call home

Uppingham Gardens is a residential care home in Berkshire. Here we support up to seven individuals with mild to moderate learning disabilities. This includes older people who may have related mental health issues, health needs and some mobility issues.

Uppingham Gardens is ideal for a mature residential looking for a relaxing and welcoming home to be a part of. We have lots of communal areas for residents to socialise such as our dining area, kitchen, lounge and large garden complete with a patio area. Here, we enjoy doing crafts and having summer BBQs!

Located in Caversham, Uppingham Gardens is part of a lovely village with excellent public transport links and local facilities.



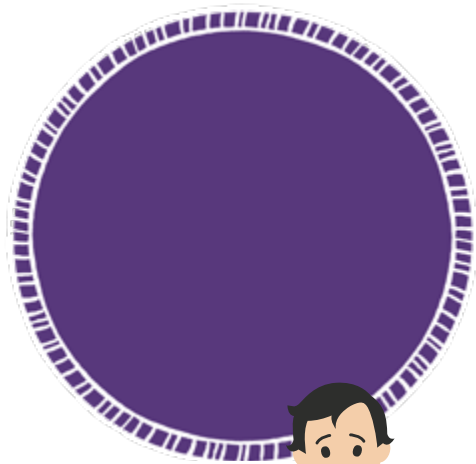
[Click here to watch our virtual tour!](#)



Our vacancy

We currently have one vacant room at Uppingham Gardens. This first-floor room is fully furnished with a bed, chair, wardrobe and drawers. There is a sink in the bedroom, and it shares a spacious wetroom with a shower on the same floor.

The home has a gentle pace of life, and we are looking for a new house mate that will enjoy our relaxed social activities, including trips to the local coffee shop and walks in the surrounding parks.



We're keeping you safe

Our main priority at Voyage Care is to help you lead the life you want, in a secure and safe way. Throughout the COVID-19 pandemic, our team is constantly updating our approach based on the latest Government policies and procedures, with steps in place to reduce the risk of transmission.

Some of our COVID safe actions include:

- Weekly COVID-19 testing for all our support staff.
- Maintaining service-level plans to reduce the risk of infection spreading and manage any outbreaks.
- Keeping a focus on infection control and hygiene protocols, including a robust supply of Personal Protective Equipment (PPE).
- Enabling a convenient virtual assessment process. This includes the use of online meetings, tours and chats with the team.
- Using technology to keep you in touch with your loved ones when socially distanced visits are not possible. This includes virtual picnics, movie nights and quizzes.
- Focusing on your mental well-being throughout this difficult time through home-based activities – some of our services have even created their own pop-up pubs!

During these unprecedented times, we understand how difficult and confusing it can be. We're here to support you by sharing reliable and honest information, keeping you informed of our response and shining a light on all the positive things happening in social care.



Our commitment to quality

We're committed to providing person-centred, high quality care and support – demonstrated by our sector-leading 95% Good or Outstanding* quality ratings by the Care Quality Commission.

Our highly trained, specialist teams use an individualised approach to support. We're committed to supporting you in a way that works for you – with reliability and consistency. You can be assured that your needs are at the centre of all we do.

**Data accurate as of April 2021*

“Staff consistently treated people with kindness and compassion. People were supported to express their views and wishes about their needs, which were respected by staff. People’s privacy and dignity were promoted by staff during the delivery of their care.”

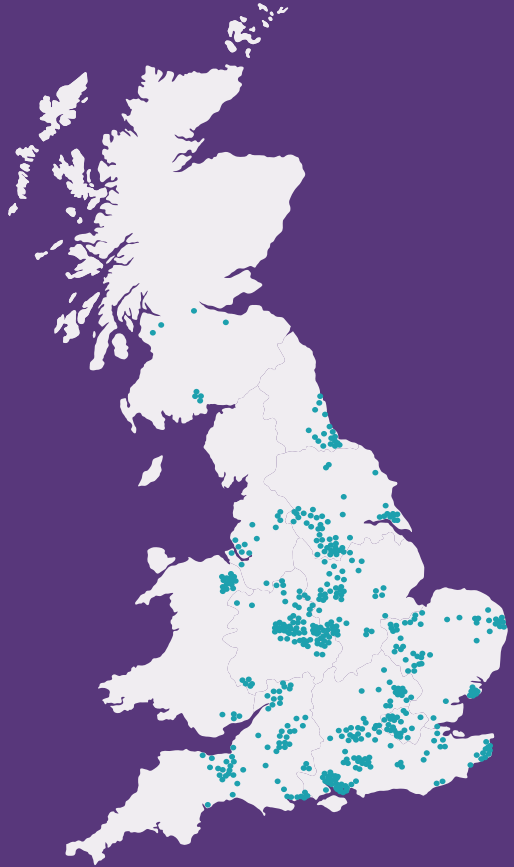
***CQC Inspection Report
Rating: Requires improvement
22 April 2020***



About Voyage Care




Voyage Care is a sector-leading provider of specialist care and support to 3,500+ people with learning disabilities, autism, brain injuries and complex needs.

We offer person-centred care in a range of settings. This can be out and about in the community, in your own home or in one of our residential care homes.



Get in touch

Contact our friendly enquiry team to discuss how we can support you or a loved one.

 0800 035 3776
 referrals@voyagecare.com
 www.voyagecare.com