

Helping Prodiges to remain at home

Visit our website to read more stories!

12-year-old Prodiges has complex care needs that mean he is vulnerable to everyday illnesses. As a result, he has spent a lot of his childhood in hospital.

But when we began supporting him, it meant Prodiges could remain at home with his family, without a hospital in sight!

The first scare

When he was born, Prodiges was diagnosed with neuro-developmental disorder, cerebral palsy and breathing difficulties that meant he required an in-situ tracheostomy.

When Prodiges was just four months old, he had a severe cardiac arrest and Dolly experienced her first scare as a parent.

Frequent hospital admissions are not uncommon for children and young people with complex care needs. This is because the complexity of the conditions they have can be difficult to manage without specialist support.

"It was really scary. The ambulance came and took us to A&E. He spent some time in the ICU getting better."

"It was not an easy time for me as a new mum on my own," said Dolly.

Prodiges recovered after a few months but sadly, it wouldn't be the last time he would find himself in hospital.

"He was almost gone ..."

When a healthy child catches the flu, it's a worrying time for parents.

But when a child with complex care needs catches the flu, the risks and complications are increased, and it can be life-threatening.



This was all too true in 2017, when Prodige caught a serious case of the flu, which left him fighting for his life.

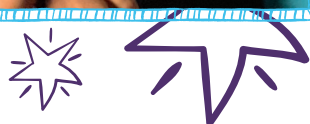
He became ill very quickly and needed urgent medical help so he could breathe.

Despite lots of medication, treatments and round the clock ventilation, Prodige was still struggling. The doctors prepared Dolly for the worst.

“It was awful. The doctors didn't think he would make it. They gave him two hours to live. Thankfully, the medication started working. I was so relieved. The reality is, in 2017, he was almost gone.” said Dolly. ”

Frequent hospital stays

After his life-threatening battle with the flu, Prodige became more susceptible to chest infections and was frequently admitted to hospital for lengthy stays so he could receive ventilation.



In December 2019, he endured a four-month period in hospital because his existing care agency couldn't administer the ventilation he required at home.

This affected the whole family and had a huge impact on Prodige's development.

He was missing out on school, community interaction and spending time with his friends and family.

The hospital decided Prodige could be better supported at home with the input of a specialist provider.

At this point, the **Children's Complex Care team at Voyage Care** were contacted to provide a consistent care package within the family home.

Our nurse-led support

We've been supporting Prodige since 2020. Our specialist team help him and his family to meet all of his needs.

This includes tracheostomy care, medication, moving and handling and at-home invasive ventilation.

We also support Prodige's social, emotional and mental wellbeing, encouraging sensory play like experimenting with music and therapeutic massage, which he enjoys.

Since our intervention, we've seen a huge improvement in Prodige's health. We're pleased to say he's had **no hospital admissions for over a year!**



Flexible and adaptable

Prodige's health has improved dramatically with our input. He no longer requires nurse support and his package of care is now delivered by healthcare assistants instead!

We've also been supporting the family to attend sleep studies at Great Ormond Street Hospital to see if Prodige could become less reliant on his ventilator due to his progress.

Plus, we're working with Prodige's school to complete risk assessments so he can return to the classroom in a safe and controlled way once possible to do so.

"We continue to actively work with other third parties, health care professionals, CCGs and others to ensure Prodige's needs are consistently met," said Yvonne Mujeri, Clinical Lead for the Children's Complex Care team.

A brighter future for Prodige

Prodige is much more than his challenges and we hope through our continued support, he can lead a happier, healthier life.

No more hospitals. No more scares. Safe at home with his family.



Visit our website to find out more about complex care for children and young adults.

About Us

We provide nurse-led care and support for people under the age of 25 who have a variety of complex care needs.

Our personalised care helps individuals remain at home with their families and within local communities – **where they belong.**



Get in touch

Contact our friendly enquiry team to discuss how we can support your child, young person or client.



020 7407 7704



CCCreferrals@voyagecare.com



www.voyagecare.com

CHILDREN'S COMPLEX CARE by

voyagecare

