

# The journey together at **Walker Lodge**



Residential, transitional and supported  
living for people with brain injuries

BRAIN INJURY REHAB by  
**voyagecare** 

# About Walker Lodge

Walker Lodge is a purpose-built service, offering proactive residential support and respite services for individuals with a brain injury. The focus of the service is to provide a supportive environment in order for people to develop skills and strategies in order to lead a more fulfilling and independent life.

Walker Lodge is committed to person-centred support planning and reviews, maximising personal ownership and motivation. Neuro-psychology, neuro-physiotherapy, speech and language therapy and neuro-OT are available where required.

The service has eight bedrooms with en-suite facilities. The property is fully wheelchair accessible, with the capacity for ceiling tracked hoists, profiling beds and other adaptations if an individual requires them. We actively encourage people to bring their own belongings and personalise their rooms as they wish.

Other facilities include a dining room with patio doors leading out onto a level access garden, a large accessible kitchen, a bathroom, a spacious lounge and an activity/therapy room.



# Our approach

Our highly trained and experienced team at Walker Lodge will work with you to develop and deliver person-centred, individualised support pathways.

We will work closely with you, your family, healthcare professionals and other key people to aid your recovery. You will remain in control of how you live your life.

Our brain injury rehabilitation teams work with a range of session-based therapists, including:

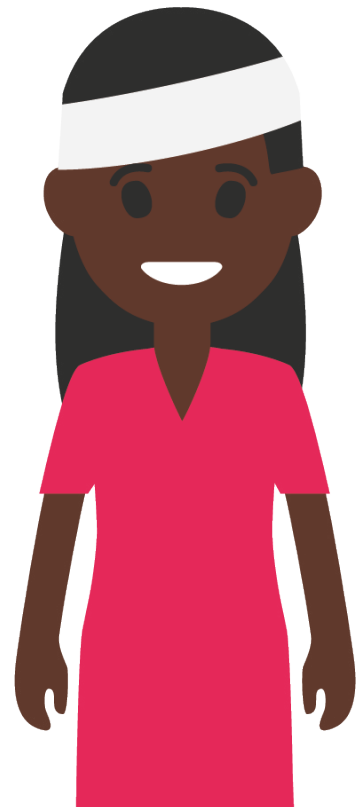
- Neuro-occupational therapy.
- Neuro-speech and language therapy.
- Neuro-physiotherapy.
- Cognitive behaviour therapy.
- Neuro-psychology.
- Neuro-psychiatry.
- Drama, art and music therapy.

*I rebelled a little bit at first, but then all the pieces of the jigsaw started fitting in and I saw it for what it was, which was my saviour.*

**Jackie, former resident  
of Sanderling House**

Many of the people we support with brain injuries also have further personal or complex needs, such as epilepsy, diabetes or substance misuse. Part of our rehabilitation support includes helping you to manage these additional needs.

We understand how important it is for you to achieve and progress towards independence. We use proven methods to monitor your progress and focus on improving your cognitive and behavioural impairments.



# Support pathway

Walker Lodge is not designed to be a home for life – rather a stepping stone towards independence and being able to participate safely and meaningfully in your community.

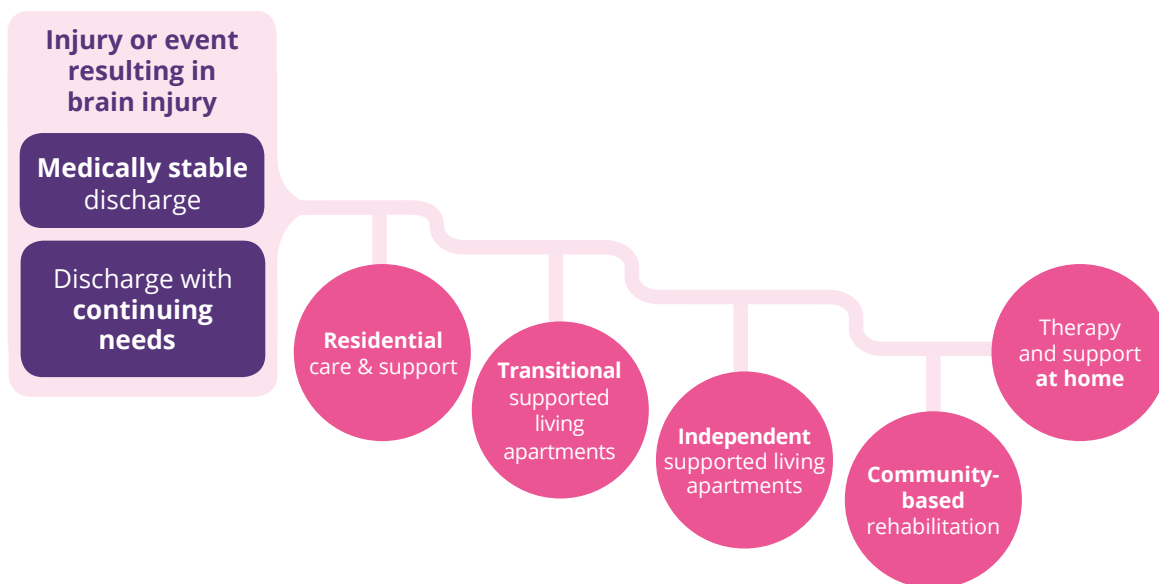
To provide the best support and recovery plans, we use person-centred approaches at Walker Lodge that reflect both what is important to you and what will deliver the most positive outcomes.

Our goal is to help you regain as many skills as possible, through our rehabilitation pathway, which includes:

- Residential care and support.
- Transitional supported living apartments.
- Community-based rehabilitation.
- Therapy and support at home.

*During the 6 months my son was supported by Voyage Care, the staff brought him back to good physical health and worked hard to improve his state of mind. We can't thank them enough.*

**Jen, Parent**







## Our commitment to quality

We're committed to providing person-centred, high quality care and support – demonstrated by our sector-leading 95% Good or Outstanding\* quality ratings by the Care Quality Commission. Our highly trained, specialist teams use an individualised approach to supporting those with a brain injury. Support is based around each persons' unique abilities, goals and preferences.

\*Data accurate as of April 2021

*We spoke to relatives of people who lived at the home, and they said, "I feel really reassured knowing that [family member] is there", "They are remarkable, I am very impressed indeed with the home."*

**CQC Inspection Report  
Rating: Good  
30 January 2018**

# Back into the community

Once you've left Walker Lodge, you can continue to access our community support services, either in your own home or at our day centres.

Our support workers can help you in a wide range of activities, ranging from looking after your home, taking part in leisure activities or personal care.

As well as physical activities, we can also provide emotional support to give you the confidence to try new experiences. These may be accessing a college course, returning to work or going on holiday. We can also

provide respite or emergency cover, subject to availability.

Our goal is to help you to live as independently as possible and continue to make your own choices.

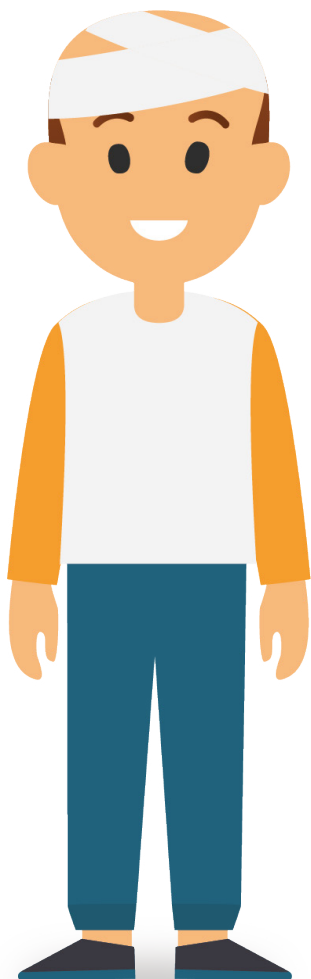
***With the help of Voyage Care I have achieved so much. I have gained independence and daily living skills and can manage my health properly. I have so much more confidence.***

**Cam, Individual**



# Assistive technology

At Walker Lodge you'll be able to take advantage of a range of options for additional personalised technologies to help you become more independent, enhance your existing skills and support you to safely take positive risks.



## Examples of assistive technology we can support you with include:



**Epilepsy sensors** to detect seizures.



**Environmental controls**, helping you turn your TV or lights on and off, open and close your curtains or doors.



**Sensors on your bed or chair** that tell our staff if they are occupied and alert us if you need support.

# About Voyage Care

Voyage Care, a specialist provider with over 25 years' experience, are experts in supporting people with brain injuries and other complex needs, such as learning disabilities, physical disabilities and autism.

We are committed to providing person-centred, high quality care and support, demonstrated by our sector-leading quality ratings. In England, 95% of our registered locations are rated as Good or Outstanding\* by the Care Quality Commission. 100%\* of our Scottish and Welsh registered locations are rated as compliant by the Care Inspectorate and CSSIW.



**16 of our 19 brain injury rehabilitation centres across the UK are accredited by Headway – the brain injury association.**

*\*Data accurate as of April 2021*

## Start your journey with us today

To find out more about our brain injury rehabilitation centres or to discuss how we can support you, contact our friendly team on the details below.

☎ **0800 035 3776**  
✉ **referrals@voyagecare.com**  
📍 **[www.voyagecare.com/care-and-support/brain-injury](http://www.voyagecare.com/care-and-support/brain-injury)**

RAIN INJURY REHAB by

**voyagecare**



BIR-341-APR-21

